

Wyndham Quarry

Proposed Quarry Expansion

HSCRPP 02/08/2023

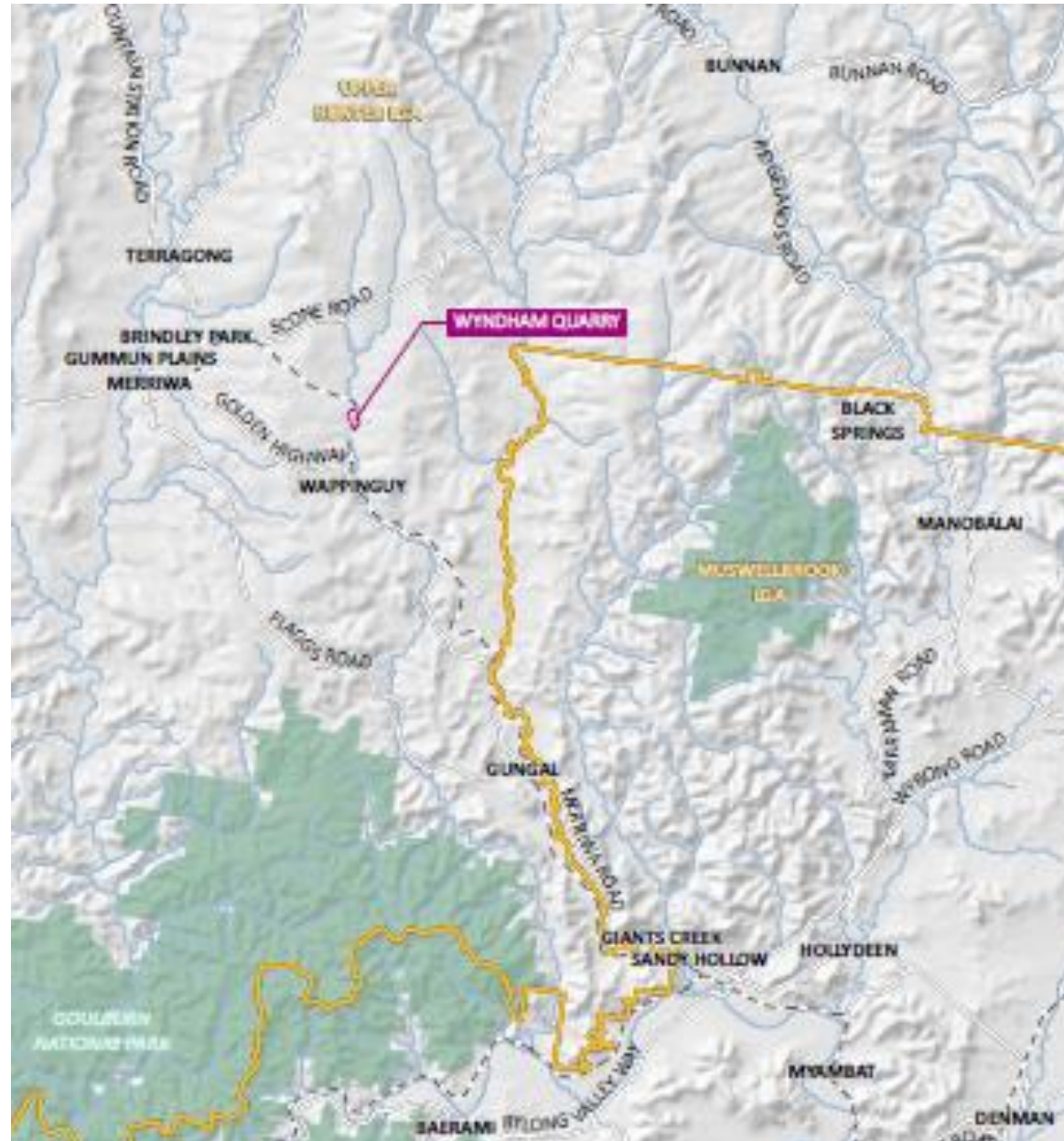
Project: Wyndham Quarry Expansion

Applicant: Mopoke Portfolio Pty Ltd
(Thomas Shannon - Director and Landowner)

Approval History and Existing Operations

- The Wyndham Quarry is a well-established business in the Upper Hunter area which originally received development consent from Merriwa Shire Council (now Upper Hunter Shire Council) on 1 June 1981, being DA 7/80.
- The original consent was for 1 Million tonnes total over 3 years (average 330,000 tpa).
- Modification 1 in 1992 to allow the ongoing extraction of quarry product limited to 100,000 tpa. Product to be transported from the site by road via an intersection with Main Road 209 (now the Golden Highway) and/or rail, at a maximum of 1,000 tonnes per day (tpd). No time limit is stated in the consent.
- The quarry occupies 14.7 ha and the former rail stockpile facility occupied app. 5.2 ha.
- Operations have been undertaken by contractors since DA 7/80 Modification 1 was approved.
- Approved operating hours are 6:00am to 7:00pm Monday to Saturday.
- Basalt product is used locally and regionally for infrastructure projects. Some weathered waste rock overburden is also sold to external customers for clean fill purposes.
- The scale and production level of the currently approved quarry is relatively small. Product is transported off site by road truck via a private access road and intersection with the Golden Highway.

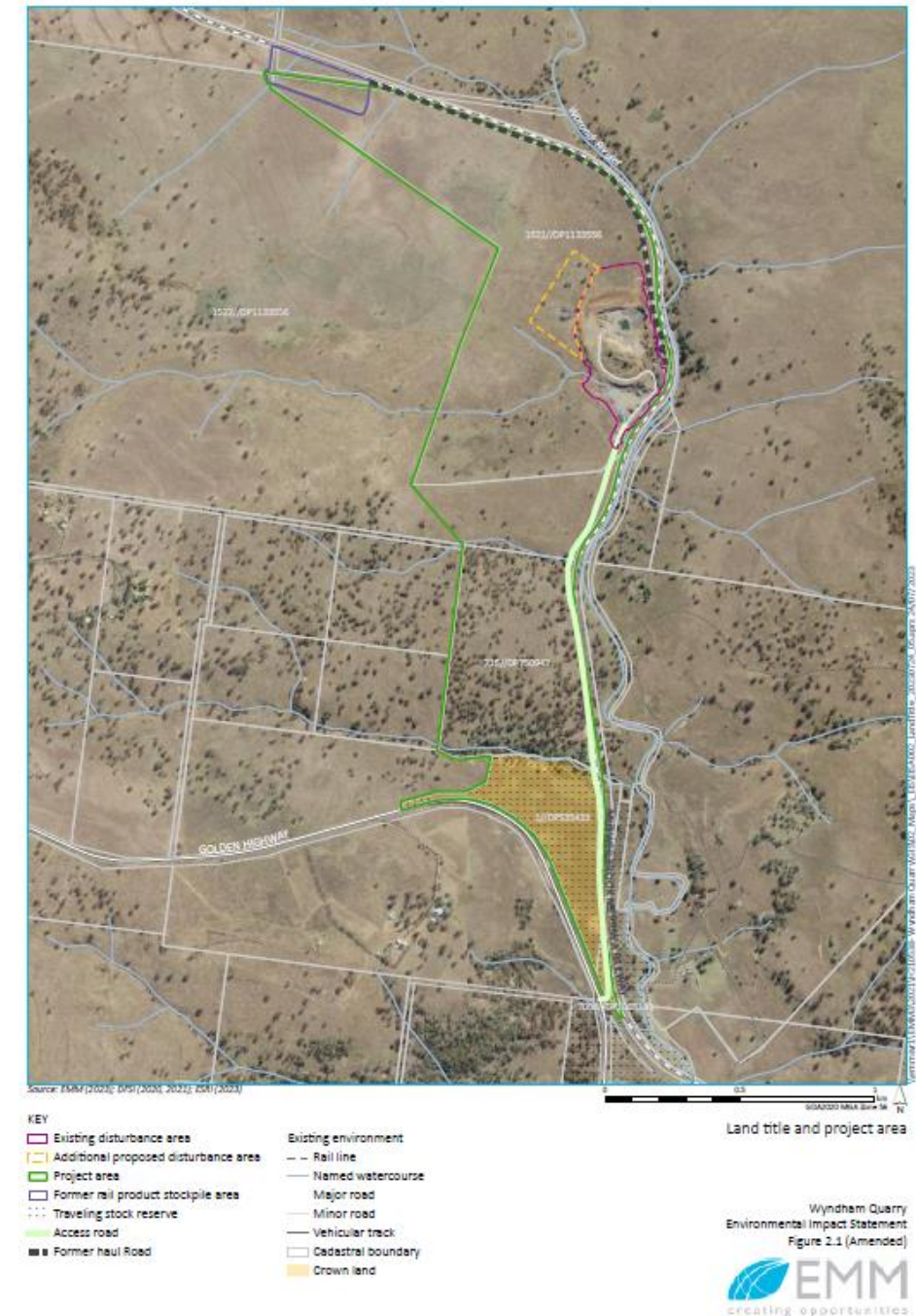
Location



The proposed Project

Key components

- Increase the quarry production level to 330,000 tpa. Transport limit increase from 1,000 tpd limit increase to 2,100 tpd quarry product.
- Operating hours 6:00am to 7:00pm Monday to Saturday (No change)
- No quarry site construction required – ongoing upgrades or replacement of existing demountable crushing and screening facilities as required.
- Ongoing use of existing infrastructure including site facilities, weighbridge, access road and upgrade of Golden Highway intersection.
- Employees to increase from approx. 4 FTE contractors to approx. 8 FTE.
- Ongoing contract drill and blast, once per week.
- Amendment report lodged to excise Country Rail Infrastructure Authority and Crown Road reserve form N/W corner as part of former rail stockpile area.



Key components

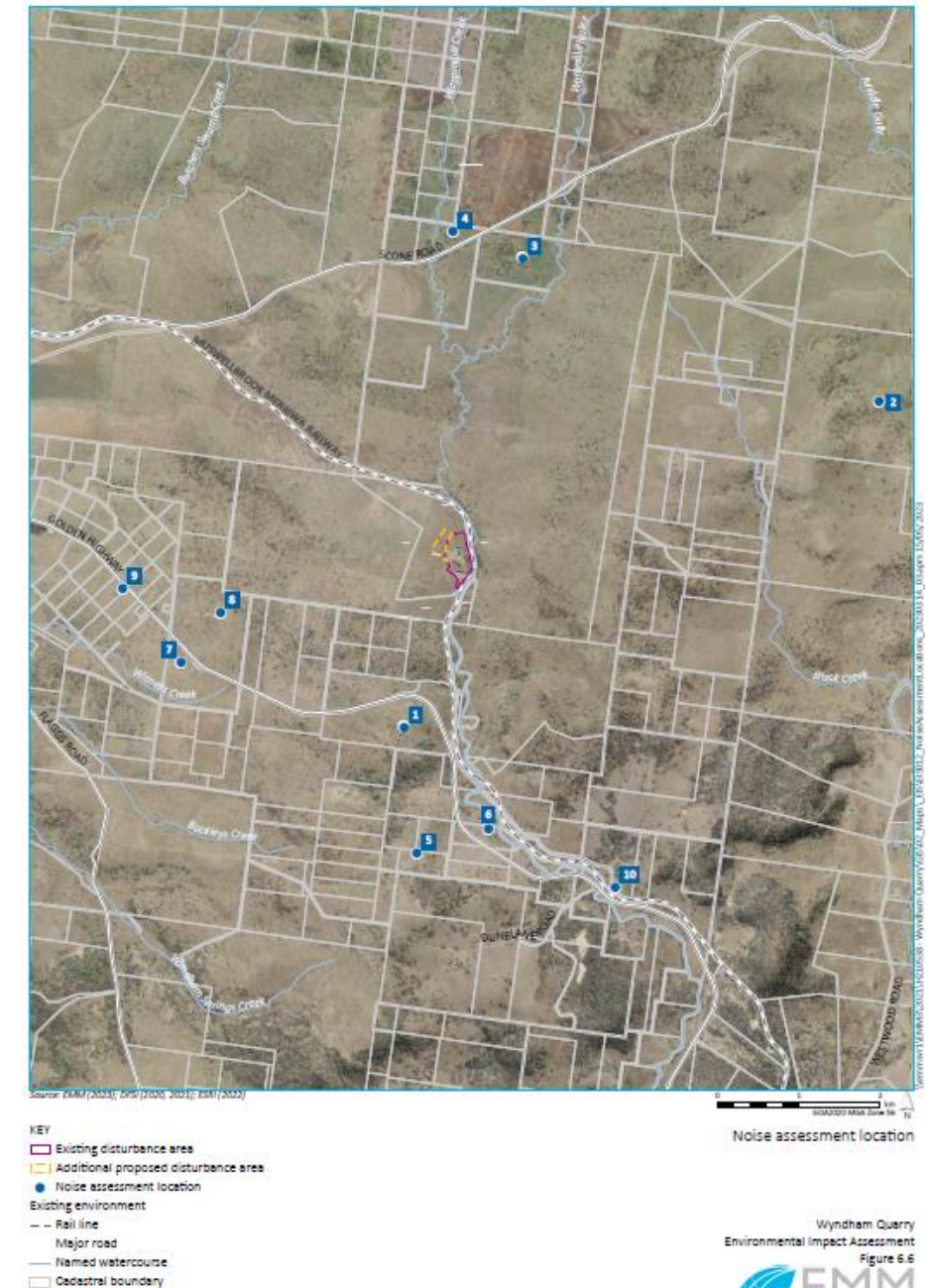
- 5



Impact Assessment Outcomes

Key studies

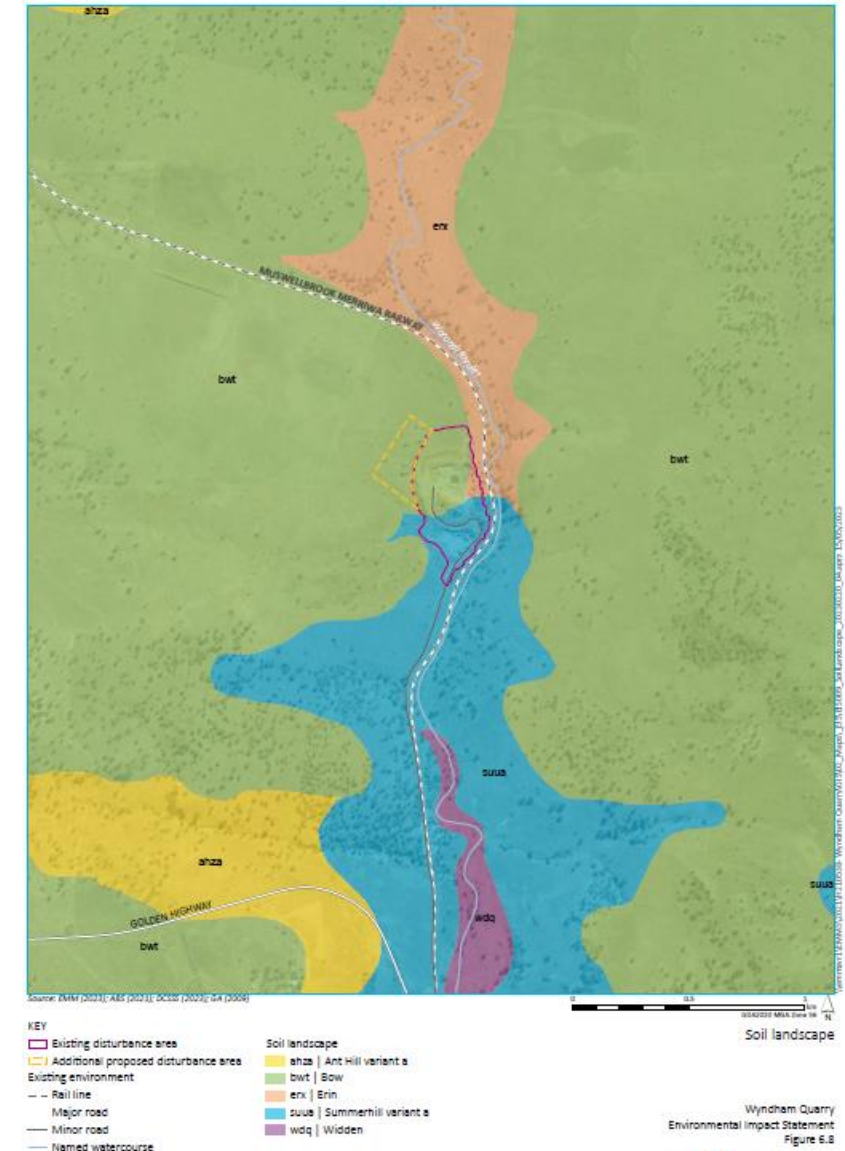
- Air quality modelling showed compliance at all residences for 24 hr and annual concentration rates.
- Noise Impact Assessment – predicted noise levels modelled. Compliance at all but 1 residence being 1dB during shoulder periods at maximum production and adverse weather only. Verification monitoring proposed.
- Traffic assessment completed. Golden Highway intersection upgrades proposed (below). TfN submission received with no issues anticipated. Consultation with TfN to occur.



Impact Assessment Outcomes

Key studies

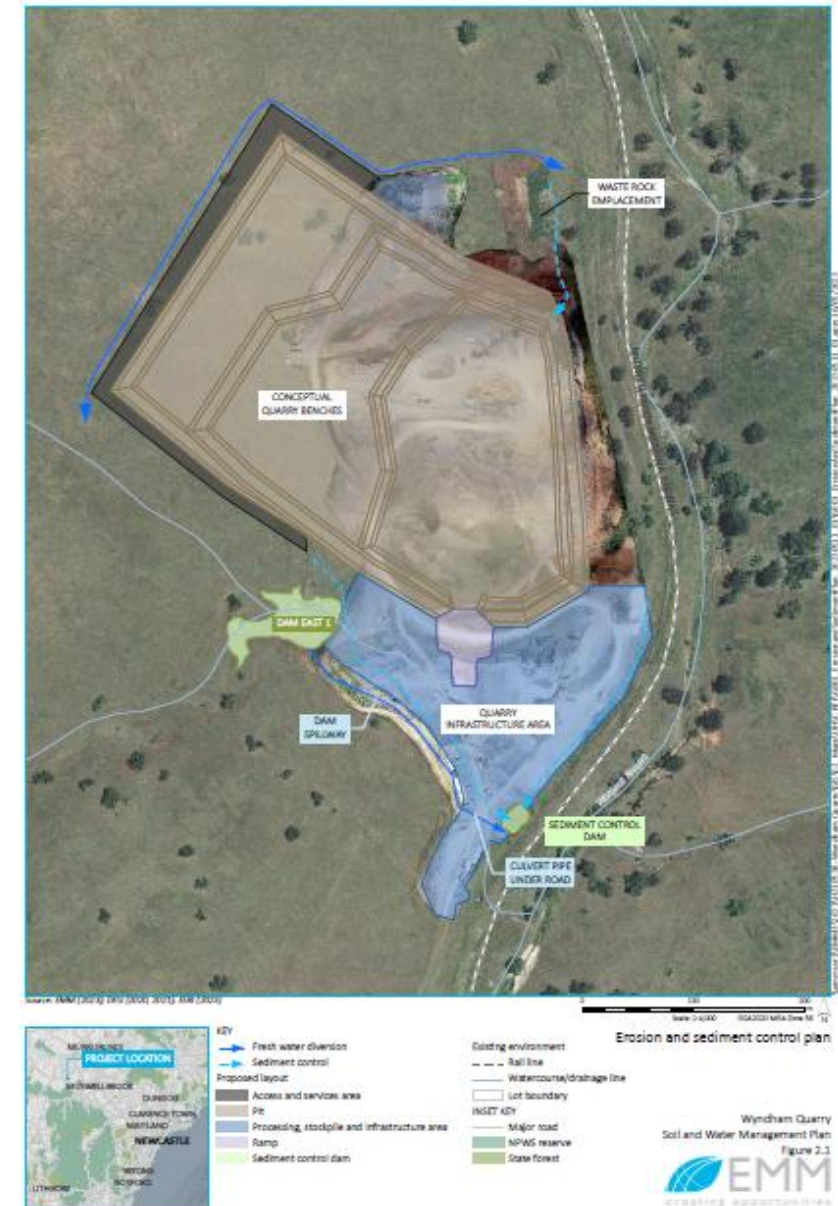
- Biodiversity BDAR study completed. White Box -Yellow Box -Blakely's Red Gum Grassy Woodland and Derived Native Grassland
- Biodiversity credits calculated. 2 species assumed present. September '23 seasonal surveys may confirm presence or not. Offsets to be purchased from market or BCT trust funds, or establish a stewardship site.
- Soil landscape identified as Bow, low risk dark clayey with basalt rocks
- Heritage assessment – no Aboriginal or non-Aboriginal heritage items present.



Impact Assessment Outcomes

Key studies

- Water resource and supply analysis undertaken including catchment harvesting analysis.
- Sediment and erosion control plan and SWMP developed. Water management structures to be upgraded to meet “Blue Book” guideline requirements.
- Water use to be prioritized from i) sediment control dam, ii) licensed industrial bore and iii) East 1 Dam. Adequate supply available for dust control and processing.



Impact Assessment Outcomes

Key studies

Rehabilitation and closure study:

Topsoil to be stripped, used in water diversion banks and stockpiled for re-use.

Opportunity for progressive rehabilitation is restricted due to:

- compact site design
- ongoing product processing in-pit
- limited quantities of waste rock for progressive backfill
- ongoing use of external product stockpile and processing area until completion of quarrying

Future land uses may include ongoing basalt quarrying of further resources or return to agricultural land use.

Stored water in-pit available for stock watering or other agricultural uses.

Safe and stable quarry benches and safety berms around perimeter walls.

Future land uses subject to owner's approval and planning controls.



Impact Assessment Outcomes

Other studies

- A bushfire assessment report was prepared by Waratah Bushfire to satisfy the requirements of Planning for Bush Fire Protection 2019 (RFS 2019) and Section 10b of the UHSC DCP. The project is mapped by Upper Hunter Shire Council as bush fire prone land (vegetation category 3) which triggers a formal assessment in respect of PBP. Recommended controls includes APZ.
- Visual Impact - views of the quarry site are restricted to longer distance views from two residences located approximately 2.02 km and 3.2 km respectively from the site. There are no public road locations with views of the quarry.

The nature of the views have the following characteristics:

- relatively long-distances from residences to the site being at least 2.02 km
- the existing quarry has been present for approximately 40 years
- the relatively small scale of the proposed quarry extension will occupy a small proportion of the broader overall view seen from these receptors
- the low elevation and low profile of the proposed operations which will remain below the horizon when viewed from these residences.

In summary, the visual impacts of the quarry from the two residences is considered to be insignificant to low. The proposed quarry is not visible from the surrounding public road network.

Consultation

- Tom Shannon has ongoing relationships with neighboring land holders.
- Letters distributed to landholders in proximity outlining project proposal.
- EIS public exhibition concluded. No public submissions.
- Second letter to be distributed following close of exhibition and amendment.

Issues to address

- Consultation with TfN to be undertaken regarding access road intersection upgrade.
- Road transport proposed to continue at the currently approved 1000tpd until intersection upgrade completed.

Office locations

SYDNEY

Ground Floor, 20 Chandos Street
St Leonards NSW 2065
T 02 9493 9500

NEWCASTLE

Level 3, 175 Scott Street
Newcastle NSW 2300
T 02 4907 4800

BRISBANE

Level 1, 87 Wickham Terrace
Spring Hill QLD 4000
T 07 3648 1200

CANBERRA

Level 2, Suite 2.04
15 London Circuit
Canberra City ACT 2601

ADELAIDE

Level 4, 74 Pirie Street
Adelaide SA 5000
T 08 8232 2253

MELBOURNE

188 Normanby Road
SouthBank VIC 3006

PERTH

Level 9, Suite 9.02
109 St Georges Terrace
Perth WA 6000



[linkedin.com/company/emm-consulting-pty-limited](https://www.linkedin.com/company/emm-consulting-pty-limited)



[emmconsulting.com.au](https://www.emmconsulting.com.au)